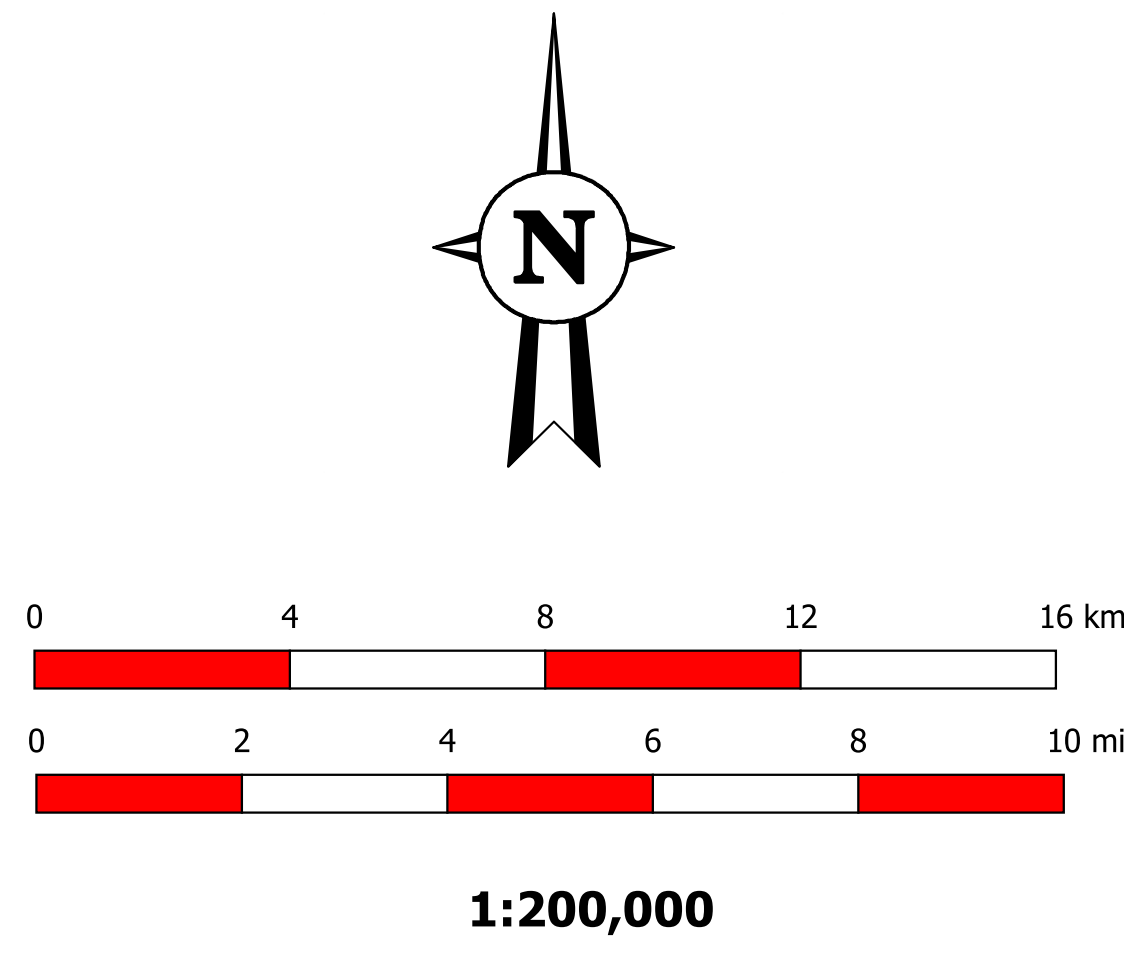
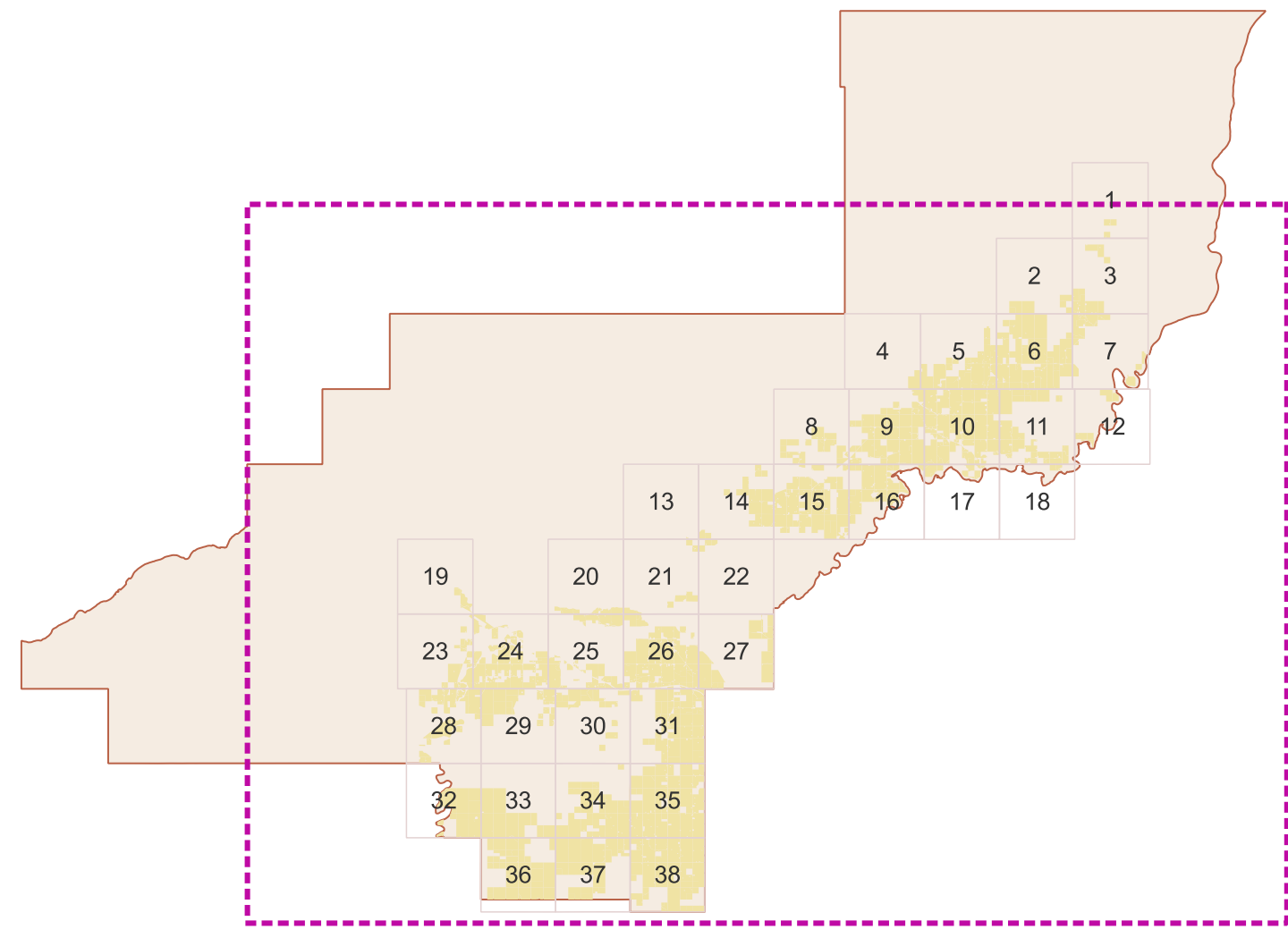
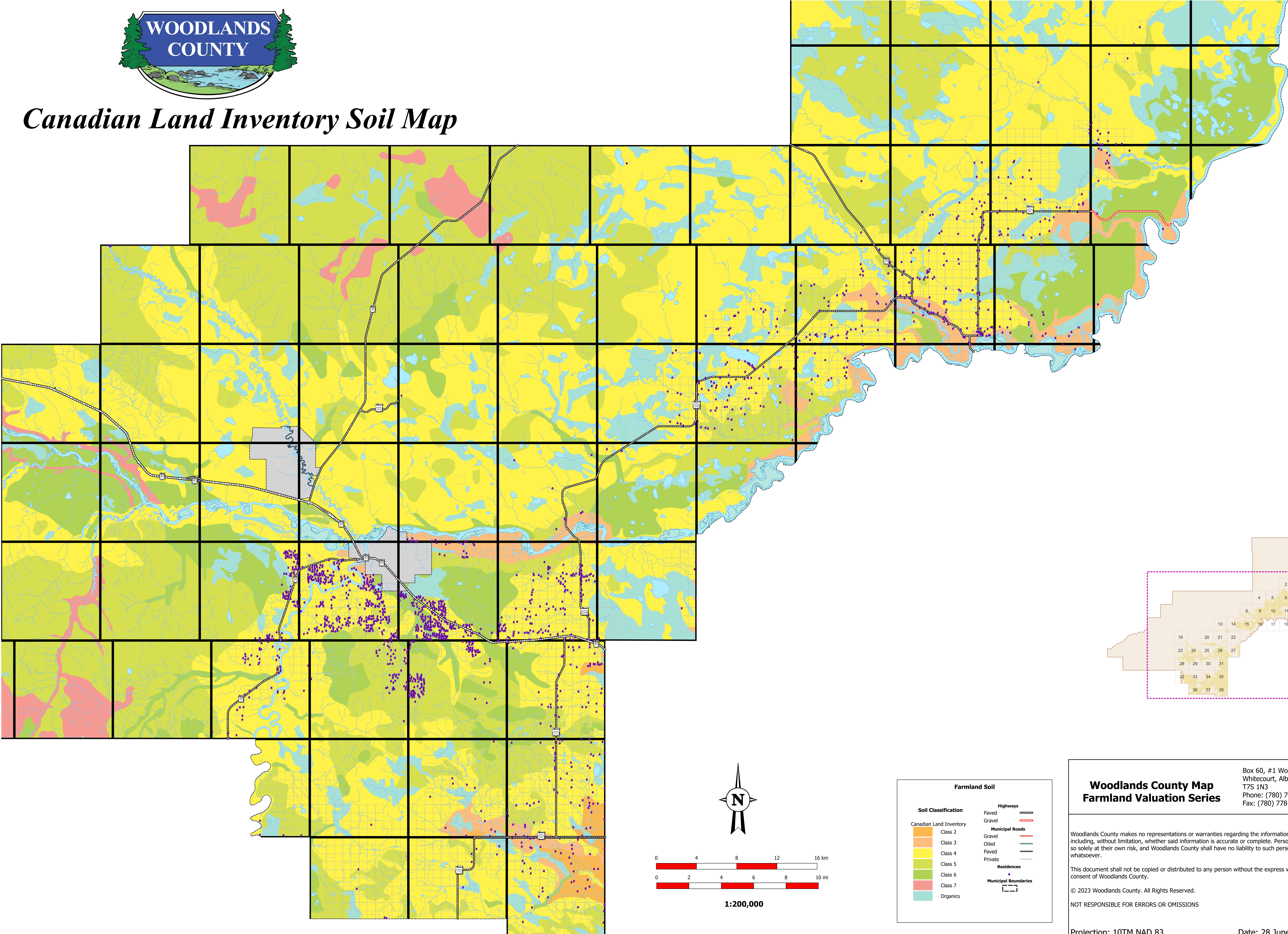


Canadian Land Inventory Soil Map



Farmland Soil

Soil Classification

Canadian Land Inventory

Class 2

Class 3

Class 4

Class 5

Class 6

Class 7

Organics

Highways

Paved

Gravel

Municipal Roads

Gravel

Oiled

Paved

Private

Residences

Municipal Boundaries

Woodlands County Map

Farmland Valuation Series

Box 60, #1 Woodlands Lane
Whitecourt, Alberta
T7S 1N3
Phone: (780) 778-8400
Fax: (780) 778-8402

Woodlands County makes no representations or warranties regarding the information contained in this document, including, without limitation, whether said information is accurate or complete. Persons using this document do so solely at their own risk, and Woodlands County shall have no liability to such persons for any loss or damage whatsoever.

This document shall not be copied or distributed to any person without the express written consent of Woodlands County.

© 2023 Woodlands County. All Rights Reserved.

NOT RESPONSIBLE FOR ERRORS OR OMISSIONS

Projection: 10TM NAD 83

Date: 28 June, 2023