



Welcome to **WOODLANDS** **COUNTY**

Your Essential *Orientation Guide*

County Leadership

Meet the people who steward our County and make progress on its strategic priorities.

Land of Opportunity

Economic development resources and regional advantages that help Woodlands County prosper.

Rural Resources

The programs, infrastructure and guidance essential to helping our ag producers thrive.

...and much more!

Welcome to WOODLANDS COUNTY

WELCOME FROM COUNTY LEADERSHIP	3	BYLAW ENFORCEMENT	9
MEET YOUR REEVE & COUNCIL	4	PLANNING & DEVELOPMENT	10
UTILITIES & WASTE SERVICES	5	AGRICULTURE SERVICES	12
PUBLIC AMENITIES AT A GLANCE	6	FAMILY & COMMUNITY SUPPORT SERVICES	13
FIRE SERVICES & HOSPITALS	7	ECONOMIC DEVELOPMENT	15
WOODLANDS COUNTY AIRPORT	8	INFRASTRUCTURE SERVICES	16
ASSESSMENT & TAXATION	8	PARKS & RECREATION	17
		DESTINATIONS WORTH DISCOVERING	20

This guide is tailor-made for new community members, business owners, and adventure seekers of every stripe.

It's your blueprint for making the most of our vital municipal services, and for exploring an abundance of world-class destinations and experiences within our borders.

Photo credit: Travel Alberta / META Productions

CONNECT *With the County*


EXPLORE THE COUNTY WEBSITE

Bookmark woodlands.ab.ca for Council updates, public services, and other County resources.

SOCIAL MEDIA CHANNELS

-  facebook.com/WoodlandsCounty
-  youtube.com/@Woodlands-County
-  instagram.com/WoodlandsCounty
-  linkedin.com/company/Woodlands-County-AB


B.A.R.C.C.

-  barcc.ca
- Fostering community-driven crime abatement.


CIVICWEB PORTAL

-  woodlands.civicweb.net
- Meeting schedules, agendas, minutes, and more.

INTERACTIVE COUNTY MAP

-  app.munisight.com/WoodlandsCounty
- View properties, infrastructure and County services.

SERVICE REQUEST

-  woodlands.ab.ca/p/service-request
- Public service request system for County issues.



A WARM WELCOME

From County Leadership



Sandhills, take a tube ride down the McLeod River, fly fish in the Freeman River, ice fish at Carson-Pegasus Provincial Park, or follow the snowmobiling trails that connect us with neighbouring municipalities.

The opportunities to enjoy nature in our region are truly endless.

Our County also offers diverse economic opportunities across agriculture, energy, forestry, and small business ventures.

Guided by our *Strategic Plan*, Council works to create exceptional opportunities for residents and businesses while remaining fiscally responsible and mindful of future generations.

Words can only convey so much. To truly appreciate Woodlands County, I encourage you to get out and explore all it has to offer; the beauty, the community, and the possibilities that make our County a great place to live, work, and play.

Dave Kusch
Reeve, Councillor Division 1
dave.kusch@woodlands.ab.ca
780-778-9337

On behalf of Woodlands County Council, welcome! Whether you are new to the area, returning home, or a long-time resident, this guide is designed to help you navigate our County and discover the many ways we can support you in settling in.

Woodlands County covers roughly 7,600 square kilometers in north-central Alberta and is home to about 5,250 residents. From our thriving agricultural lands to the communities of Blue Ridge, Fort Assiniboine, Goose Lake, and Anselmo, as well as country residential areas, there's a peaceful place here for everyone to call home.

For those who love the outdoors, Woodlands County is a land of adventure. Explore the scenic Hard Luck Canyon, experience a piece of history in Fort Assiniboine, quad across the



have a question, concern, or idea, please use our online [service request form](#). Your request will go directly to the right department so we can respond quickly and effectively. Alternatively, please give us a call if that better suits your needs.

Our County takes a common-sense approach to governance, one that balances community needs with fiscal responsibility and long-term planning. Working collaboratively with Council, industry, and residents alike, Administration remains committed to maintaining the quality of life that makes this region such a great place to live, work and play.

Here in Woodlands County you'll encounter a community where common sense, hard work, and cooperation guide everything we do.

Thank you for taking an active role in our community. Together, through cooperation and accountability, we'll ensure this remains a place where opportunity and rural living go hand in hand. From all of us at Woodlands County Administration, welcome. We look forward to meeting you and seeing you in the woods.

Matthew Ferris
Chief Administrative Officer
matthew.ferris@woodlands.ab.ca
780-778-8400

Welcome to Woodlands County, a community where common sense, hard work, and cooperation guide everything we do. Whether you are a long-time resident, a new homeowner, or working in one of our many industries, we're truly glad to have you here.

Woodlands County is built on people doing their share: residents who take pride in their properties, businesses that invest locally, and staff who deliver essential services with care and professionalism. From maintaining roads and supporting development to planning for the future, our team is focused on practical solutions that keep the County running efficiently and sustainably.

There's always room to improve at the County, and your feedback helps us do just that. If you

Meet Your REEVE & COUNCIL

Woodlands County is comprised of seven divisions, each of which is represented by a Councillor elected at-large.

Following a municipal election, Council selects one of its members to serve as Reeve. The Reeve continues to represent his or her electoral division.



COUNCILLOR PROFILES AND APPOINTMENTS

Council is committed to serving residents not just through direct policy, but through active participation on various external boards, committees and commissions.

By sitting on these various governing bodies—which range from regional planning and municipal collaboration initiatives to specific community service groups—Council members ensure the County's interests are represented and that regional decisions are made with resident benefit and the long-term stewardship of our region in mind.

Visit the [Council section](#) of our website to learn more about each Councillor and their respective board, committee, and commission appointments.

SOLID WASTE COLLECTION

Woodlands County provides solid waste pickup services in the hamlets of Blue Ridge and Fort Assiniboine on the following schedule:

- **Blue Ridge:** Friday mornings
- **Fort Assiniboine:** Monday mornings (Tuesday mornings on long weekends)

Please note that the maximum weight for each garbage bag is **50 pounds**.

Residents not residing in these communities can bring solid waste to any of the three County transfer stations, the Whitecourt Transfer Station, or the Whitecourt Landfill. Residents can also rent bins and engage third-party providers.

WHITECOURT
Regional Landfill



The Whitecourt Regional Landfill is a joint partnership between Woodlands County and the Town of Whitecourt. For landfill inquiries or concerns, please contact the directly at **780-648-2273**.

WHITECOURT REGIONAL LANDFILL 1

Hwy 43, 17 km southeast of Whitecourt

April 1 to September 30:
Monday through Thursday 9:00 a.m. - 5:30 p.m.

October 1 to March 31:
Monday through Saturday 9:00 a.m. - 4:30 p.m.

EXTERNAL LINK DISCLAIMER:
This guide contains links to third-party GPS locations. Please be advised that these localities are maintained by their respective operators and may change. The County is not responsible for the maintenance, accuracy, or reliability of any external links or third-party content.

UTILITIES & WASTE SERVICES

Woodlands County collaborates with the Town of Whitecourt to provide area residents with accessible, responsible waste management and recycling services.

TRANSFER STATIONS

The County operates three strategically located transfer stations to provide convenient drop-off points for your household waste, recycling, and other accepted items.

County transfer stations operate Tuesdays, Wednesdays, Saturdays and Sundays year-round from 10:00 a.m. to 4:00 p.m.

ANSELMO TRANSFER STATION 2

Sec Hwy 751, 18 km south of Hwy 43

GOOSE LAKE TRANSFER STATION 3

Twp Rd 614, 2 km east of Sec Hwy 658

DORIS CREEK TRANSFER STATION 4

South of Sec Hwy 661 on Range Rd 55

TRANSFER STATION TAGS

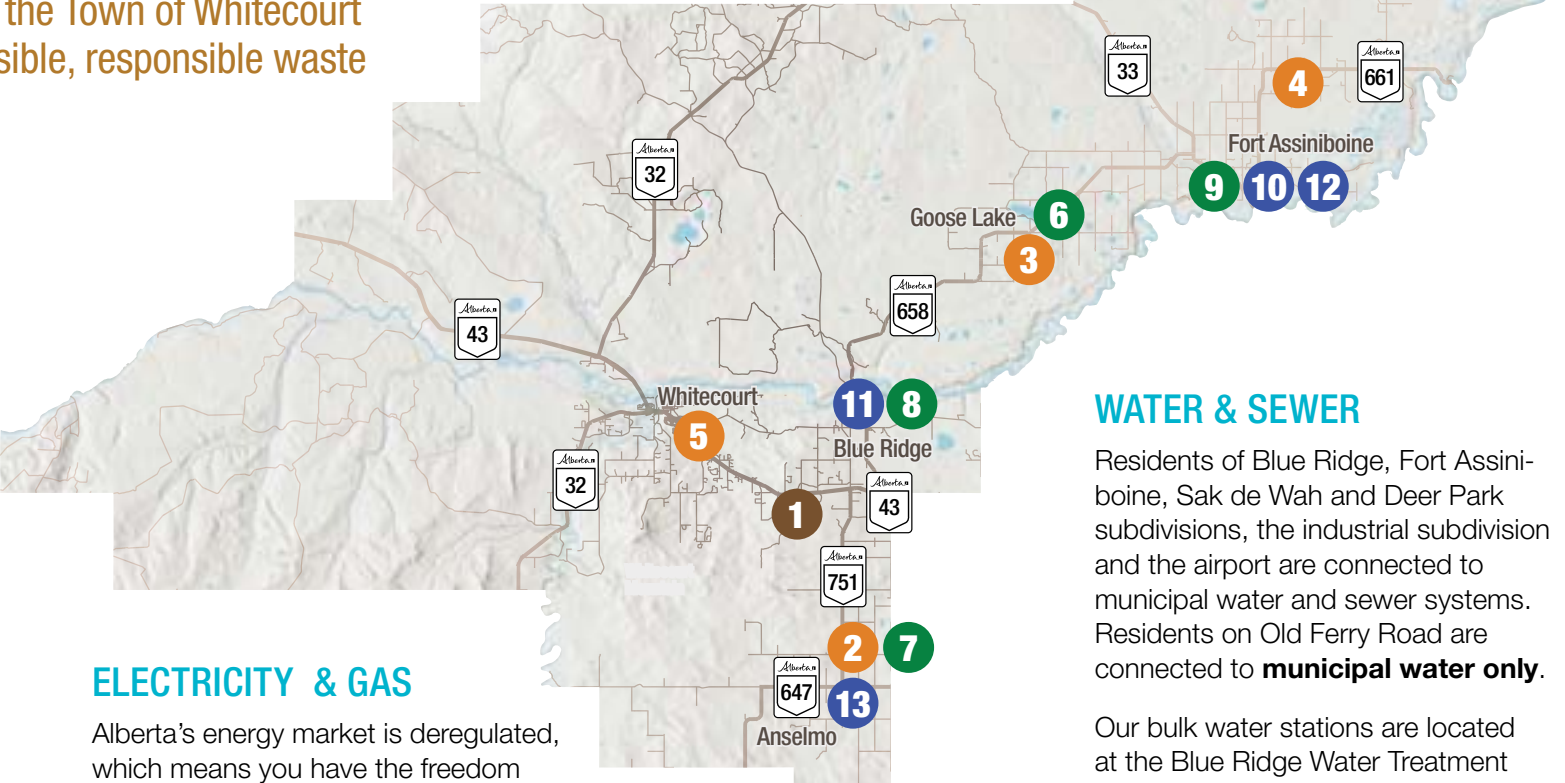
A window tag is required to access our facilities. New residents can visit either municipal office to request a tag. Simply display the tag upon entry to confirm your County residency.

WHITECOURT TRANSFER STATION

In addition to County facilities, residents can also use the Whitecourt Transfer Station to dispose of household waste and recycling. Open seven days a week from 10:00 a.m. to 6:00 p.m.

WHITECOURT TRANSFER STATION 5

Old Blue Ridge Highway, end of 41 Avenue



ELECTRICITY & GAS

Alberta's energy market is deregulated, which means you have the freedom to choose your electricity and natural gas provider. The table below shows a sample of regional providers and is not a complete list.

APEX UTILITIES	
apexutilities.ca	1-866-222-2067
DIRECT ENERGY	
directenergy.ca	1-866-420-3174
EPCOR UTILITIES	
epcor.com	1-800-667-2345
FORTISALBERTA	
fortisalberta.com	780-310-9473
TRL GAS CO-OP	
trlgascoop.com	780-779-9990

RECYCLING BINS

The County maintains recycling bins at four convenient locations. Household recyclable items like paper, tin and plastic are accepted.

GOOSE LAKE BINS 6

Past the Goose Lake gateway sign

ANSELMO BINS 7

At the Anselmo Transfer Station

BLUE RIDGE BINS 8

At the Blue Ridge General Store

FORT ASSINIBOINE BINS 9

East of 3rd Street, off State Avenue

WATER & SEWER

Residents of Blue Ridge, Fort Assiniboine, Sak de Wah and Deer Park subdivisions, the industrial subdivision and the airport are connected to municipal water and sewer systems. Residents on Old Ferry Road are connected to **municipal water only**.

Our bulk water stations are located at the Blue Ridge Water Treatment Plant and the Fort Assiniboine Water Treatment Plant. Ag fill stations are located in Anselmo and at our regional municipal office.

To access these bulk water facilities, please pick up the water fob from either municipal office.

FORT ASSINIBOINE BULK FILL 10

At the water treatment plant

BLUE RIDGE BULK FILL 11

At the water treatment plant

AG FILL STATION 1 12

At the regional municipal office

AG FILL STATION 2 13

In Anselmo

PUBLIC AMENITIES

at a Glance

SCHOOL DIVISIONS

NORTHERN GATEWAY PUBLIC SCHOOLS

Box 840, 4816 - 49 Ave | Whitecourt, AB | T7S 1N8
W: ngps.ca T: 780-778-2800
E: learning@northerngateway.ab.ca

PEMBINA HILLS SCHOOL DIVISION

5310 - 49 Street | Barrhead, AB | T7N 1P3
W: pembinahills.ca T: 780-674-8500
E: info@phrd.ab.ca

LIVING WATERS CATHOLIC SEPARATE SCHOOL DIVISION

Box 1949, 4204 Kepler Street | Whitecourt, AB | T7S 1P6
W: livingwaters.ab.ca T: 780-778-5666
E: lw.info@livingwaters.ab.ca

MUNICIPAL OFFICES

Our two municipal offices are strategically located to provide our residents with services and resources.

Both offices are open for business Monday to Friday from 8:15 a.m. to 4:30 p.m., with a lunch hour closure between 12:00 p.m. and 1:00 p.m.

Both municipal offices close for statutory holidays.

MAIN MUNICIPAL OFFICE 1

Box 60, #1 Woodlands Lane | Whitecourt, AB | T7S 1N3
T: 780-778-8400 TF: 1-888-870-6315
E: admin@woodlands.ab.ca

REGIONAL MUNICIPAL OFFICE 2

61053A Hwy 33 | Fort Assiniboine, AB | T0G 1A0
T: 780-584-3866 TF: 1-866-584-3866
E: admin@woodlands.ab.ca

COMMUNITY HALLS

The County provides funding for six accessible community halls and public facilities ready for resident use. These spaces are ideal for local events, private parties, organizational meetings, and recreational activities across the County. Secure the spot for your next function today!

For general information on locations, amenities, and rental bookings, please visit woodlands.ab.ca/p/community-facilities or call us at 780-778-8400.

WESTWARD COMMUNITY CENTRE 1

130019 Township Road 593A | Whitecourt, AB
T: 780-779-4343

ANSELMO COMMUNITY HALL 2

AB-647 | Woodlands County, AB
W: anselmohall.com T: 780-786-4280
E: anselmohallbookings@gmail.com

From schools and libraries to multi-use community halls, these facilities ensure residents have access to core educational opportunities, learning resources, and places of connection.

BLUE RIDGE COMMUNITY HALL 3

304 2 Avenue | Blue Ridge, AB
E: brclrental@gmail.com T: 780-648-3934

GOOSE LAKE COMMUNITY HALL 4

83037B Township Road 615 | Lone Pine, AB
T: 780-584-2452

TOPLAND HALL 5

1A0, AB-658 | Fort Assiniboine, AB
T: 780-584-2617

FORT ASSINIBOINE LEGION 6

32 State Avenue | Fort Assiniboine, AB
T: 780-674-1688

LIBRARY SERVICES

Libraries are vital community assets in Woodlands County. The County supports this network by fully funding the Woodlands Library Board—which oversees the Blue Ridge and Fort Assiniboine Libraries—and by providing partial funding to the Whitecourt & District Public Library through a service agreement.

We encourage you to visit these libraries and make the most of the valuable services and experiences they offer.

BLUE RIDGE PUBLIC LIBRARY 1

117 – 2nd Ave (Veterans Avenue) | Blue Ridge
W: blueridgelibrary.ab.ca T: 780-648-3991
E: blueridgelibrary@yrl.ab.ca

HOURS OF OPERATION

- Monday: 12:00 p.m. - 6:00 p.m.
- Tuesday: 10:00 a.m. - 6:00 p.m.
- Wednesday: 10:00 a.m. - 6:00 p.m.
- Thursday: 12:00p.m. - 8:00 p.m.
- Friday: 12:00 pm - 6:00 p.m.

FORT ASSINIBOINE PUBLIC LIBRARY 2

Fort Assiniboine School, 35 State Avenue | Fort Assiniboine
W: fortassiniboinelibrary.ab.ca T: 780-584-2227
E: fortassiniboinelibrary@yrl.ab.ca

HOURS OF OPERATION

- Monday - Friday: 8:30 a.m. - 4:00 p.m.
- Closed 12:30 p.m. - 1:00 p.m. daily for lunch

WHITECOURT & DISTRICT PUBLIC LIBRARY 3

5201 – 49th Street | Whitecourt
W: whitecourtlibrary.ab.ca T: 780-584-2227
E: info@whitecourtlibrary.ab.ca

HOURS OF OPERATION

- Monday - Friday: 10:00 a.m. - 8:00 p.m.
- Saturday: 12:00 p.m. - 4:00 p.m.
- Closed Sundays and statutory holidays

FIRE SERVICES

Woodlands County is served by volunteer fire departments in Anselmo, Blue Ridge, Goose Lake, and Fort Assiniboine. Together, these departments provide fire protection and emergency response services across the County, helping safeguard residents, properties, and the environment alike.

This department also fosters community safety through education and fire prevention initiatives.

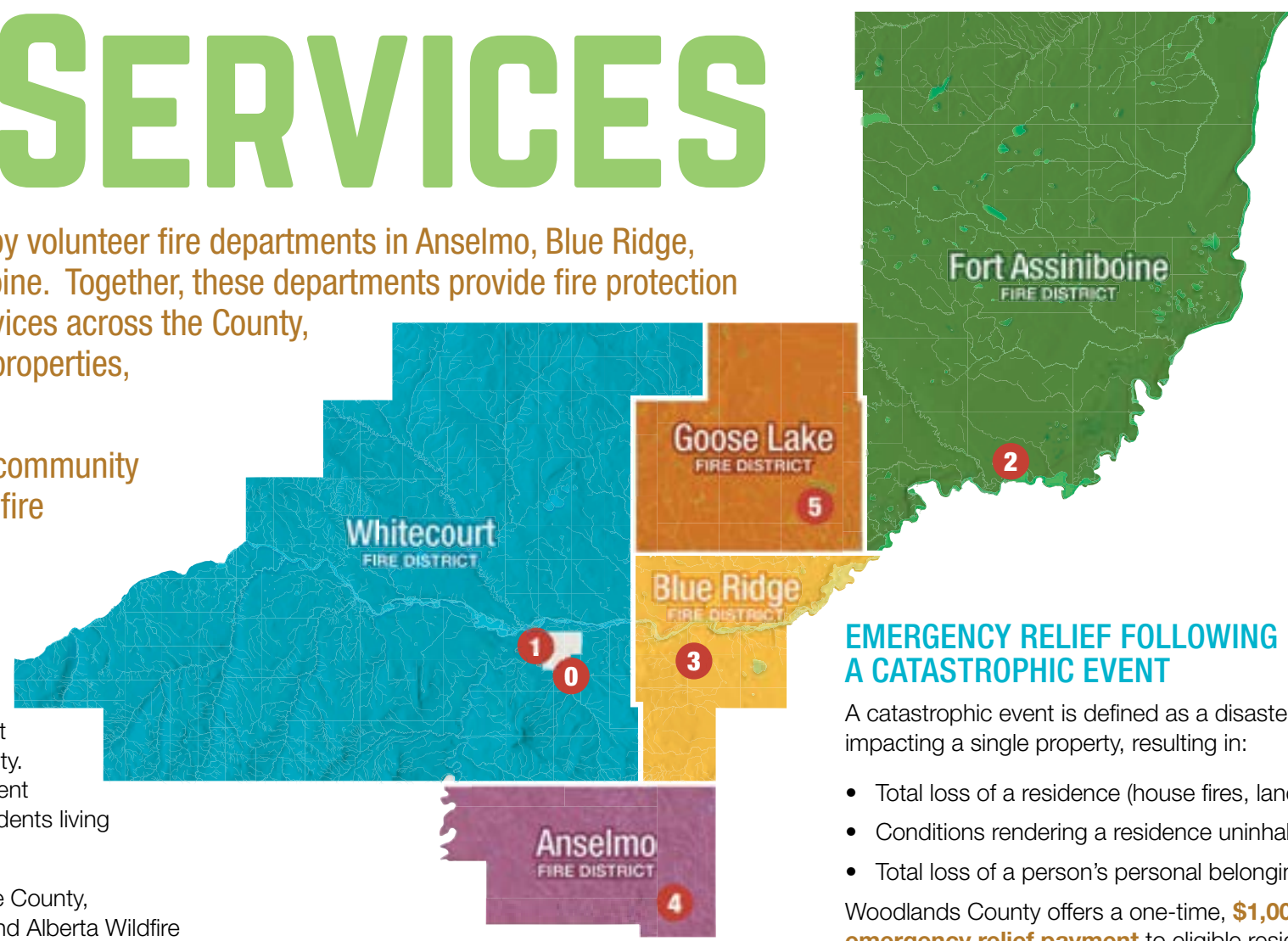
PARTNERSHIPS IN FIRE PROTECTION

Intermunicipal collaboration helps augment Woodlands County's fire protection capacity. This includes the Whitecourt Fire Department providing essential services to County residents living in the Whitecourt area.

Mutual-aid agreements with Lac Ste. Anne County, Barrhead County, the MD of Greenview, and Alberta Wildfire help ensure that additional fire suppression resources can be called upon when required.

FIRE SERVICES DETACHMENTS

FIRE SERVICES HEADQUARTERS <div>0</div>	BLUE RIDGE - STATION 3 <div>3</div>
Main Municipal Office Box 60, #1 Woodlands Lane Whitecourt, AB T: 780-778-8400 C: 780-204-9588	208 3rd Street Blue Ridge C: 780-305-4183
WHITECOURT - STATION 1 <div>1</div>	ANSELMO - STATION 4 <div>4</div>
Box 509, 5205 51 Street Whitecourt T: 780-778-8400 C: 780-204-9588	565077 RR 102 Anselmo C: 780-779-6421
FORT ASSINIBOINE - STATION 2 <div>2</div>	GOOSE LAKE - STATION 5 <div>5</div>
33 Thomson Road Fort Assiniboine C: 780-305-4183	83037A Township Road 615 Goose Lake C: 780-778-2342



EMERGENCY RELIEF FOLLOWING A CATASTROPHIC EVENT

A catastrophic event is defined as a disaster primarily impacting a single property, resulting in:

- Total loss of a residence (house fires, landslides);
- Conditions rendering a residence uninhabitable; or
- Total loss of a person's personal belongings.

Woodlands County offers a one-time, **\$1,000.00 emergency relief payment** to eligible residents who experience such an event.

Visit woodlands.ab.ca for details on eligibility requirements and the Emergency Relief Assistance Program.

BECOME A VOLUNTEER FIREFIGHTER

At Woodlands County, our fire departments are always on the lookout for new members.

The path to becoming a volunteer firefighter is challenging, but deeply rewarding. It offers new skills, unique experiences, unshakable bonds with your team, and the privilege of serving your community in a meaningful way.

Ready to answer the call? Start by visiting woodlands.ab.ca/p/fire-services to explore frequently asked questions and submit an application form, or call the fire stations directly for more information.

HOSPITALS



Woodlands County residents have local access to comprehensive medical care through the Whitecourt Healthcare Centre.

The Whitecourt facility is complemented by several additional hospitals located in adjacent municipalities, ensuring a variety of regional healthcare options for all County residents.

WHITECOURT HEALTHCARE CENTRE & EMERGENCY ROOM	
20 Sunset Boulevard, Whitecourt	780-778-2285
MAYERTHORPE HEALTHCARE CENTRE & EMERGENCY ROOM	
4417-45 Street, Mayerthorpe	780-786-2261
BARRHEAD HEALTHCARE CENTRE & EMERGENCY ROOM	
4815-51 Avenue, Barrhead	780-674-2221
SWAN HILLS HEALTHCARE CENTRE	
29 Freeman Drive, Swan Hills	780-333-7000
FOX CREEK HEALTHCARE CENTRE & EMERGENCY ROOM	
600-3rd Street, Fox Creek	780-622-3545

WOODLANDS COUNTY AIRPORT

Woodlands County Airport (CYZU) is a premier regional aviation gateway, located just minutes west of Whitecourt and proudly operated by Woodlands County.

Featuring a 5,797-foot, fully lit asphalt runway equipped with ARCAL lighting, along with both VFR and IFR approaches; CYZU offers safe, reliable operations in virtually any weather.

As one of Alberta's busiest and most versatile regional airports, CYZU supports a dynamic range of commercial, industrial, forestry, emergency response, and recreational aviation activity.

With a staffed NAV CANADA Flight Service Station, convenient on-call fuel services, ample aircraft parking, underwing camping opportunities, and a provincial air-tanker base for wildfire operations, the



airport is built to meet the needs of both industry and adventure.

Handling tens of thousands of aircraft movements every year, Woodlands

County Airport plays a vital role in connecting people, business, and opportunity. It strengthens the region's economic engine, enhances community safety, and opens the door to travel, tourism, and investment throughout north-central Alberta.

Visit the [Airport section](#) of the County website for more information about CYZU.



ASSESSMENT & Taxation

ABOUT ASSESSMENT

The County contracts its assessment function to Accurate Assessment Group who manage all aspects of the annual assessment process. Assessments for residential and non-residential properties are determined based on the physical condition of the property as of December 31 and its market value as of July 1 of the preceding year.

DISPUTING YOUR PROPERTY ASSESSMENT

If you believe your assessment is unfair, you may file a formal complaint with the Assessment Review Board. Download this form from the [Tax Assessment section](#) of the County website or ask for it at either municipal office. Your complaint must be filed on or before the deadline indicated on the front of your annual tax notice.

To discuss your property assessment, contact [Accurate Assessment Group](#).

TAXATION PAYMENT OPTIONS

Payments may be made at either municipal office during regular business hours (8:15 a.m. to 4:30 p.m., closed for lunch). The County accepts cash, cheque, debit, Visa or Mastercard. Additionally, you may make a tax payment via online banking, OptionPay (a third-party processor) and most financial institutions.

TAX INSTALLMENT PAYMENT PLAN (TIPP)

The County's TIPP program lets you pay your annual property taxes in twelve small monthly payments instead of one large lump sum.

TIPP helps make budgeting easier, but remember that your payment amount will likely change halfway through the year. For the first five months, your payments are an **estimate** based on last year's bill. From June to December, payments are adjusted based on the **current year's tax levy**. The County doesn't know the exact amount of taxes you owe for the current year until the budget is finalized in late spring. Because of this, the year is split into two payment periods.

Pick up a TIPP enrolment form at either municipal office, or [click here](#) to download a PDF version.





BYLAW

Enforcement

Whether resolving animal issues, enforcing local bylaws or assisting with provincial ordinances, this department plays a crucial role in ensuring peace and maintaining quality of life across our County.

Woodlands County, in partnership with enforcement services resources from Lac Ste. Anne County, is responsible for enforcing County bylaws and resolving local, non-criminal issues.

Activities routinely include addressing public concerns related to parking, noise complaints, property maintenance, animal control, and business licenses.



Different provincial statutes factor into bylaw enforcement in the County, including the *Traffic Safety Act*, *Off-Highway Vehicles Act*, *Gaming & Liquor Act*, and *Petty Trespass Act*.

DIRECT LINE TO PATROL OFFICERS

For non-emergency bylaw enforcement matters, call Lac Ste. Anne County Enforcement Services at **780-785-3630**. You can also submit an online bylaw enforcement request by visiting the [Woodlands County website](#).

Remember: For any emergencies that require immediate assistance from police, fire or an ambulance, **DIAL 911**.

ANIMAL CONTROL

Legislation

Woodlands County's [Animal Control Bylaw #432/14](#) deals with licences for dogs, penalty fees, stray animals and other animal-related issues in our communities. In accordance with this bylaw, any dog over the age of six months must be tagged and licensed.



REPORT A DOG AT LARGE

If you find a dog wandering in Woodlands County, please call Lac Ste. Anne County Enforcement Services at **780-785-3630**. They will dispatch an animal control officer to pick up the animal at its last known location.

Never retrieve a wayward dog, as neither the County nor any veterinarian clinic will accept it in this manner.

DOG TAG PROGRAM

You can purchase a County dog tag for just \$10 for a spayed or neutered dog, or \$25 for a dog that's intact. Tags are free of charge for guide dogs, hearing ear dogs, wheelchair assist dogs, trained police dogs or seeing-eye dogs. Come into either municipal office to fill out a form and purchase your tag.

All pet tags and associated numbers are issued for the lifetime of the dog while residing in Woodlands County. Replacement tags can be purchased for a flat fee of \$2.50 per dog.

FINES FOR DOG-RELATED INFRACTIONS

Untagged dogs risk a \$50 fine for the first offence and increases for each additional offence. Other dog-related bylaw infractions that may incur fines include:

- At large/causing property damage
- Excessive barking/howling that disturbs the peace
- Biting, attacking, killing, or injuring another animal

Visit the [Bylaws & Policies section](#) of the County website to see the fee schedule for animal-related bylaw infractions.

RCMP's ROLE

in the Community

Woodlands County is served by five separate RCMP detachments located in Whitecourt, Swan Hills, Fox Creek, Mayerthorpe, and Barrhead. RCMP personnel handle serious matters like 9-1-1 emergencies, traffic violations, drug offenses, and criminal investigations.

For non-emergency inquiries such as prior incidents, noise disturbances, and RCMP matters that do not require immediate police response call **310-RCMP (310-7267)** or **contact your nearest RCMP detachment**.

MAYERTHORPE RCMP DETACHMENT

Information: **780-786-2291** Complaints: **780-786-2800**

BARRHEAD RCMP DETACHMENT

Information: **780-674-4848** Complaints: **780-674-2696**

FOX CREEK RCMP DETACHMENT

Information: **780-622-3740** Complaints: **780-622-3580**

SWAN HILLS RCMP DETACHMENT

Information: **780-333-4450** Complaints: **780-339-4459**

WHITECOURT RCMP DETACHMENT

Information: **780-779-5900** Complaints: **780-778-5454**



PLANNING &

In Woodlands County, our growth mandate is clear: preserve our rural heritage while promoting responsible, sustainable land use. If you're planning to build, develop, or make changes to your land, we're here to help ensure the success of your project.

DEVELOPMENT

ABOUT PLANNING & DEVELOPMENT

The Planning & Development department helps guide responsible, orderly land use and development throughout the County. We ensure that growth aligns with the needs of our community and complies with Alberta's *Municipal Government Act*.

Our planning decisions are informed by a range of guiding documents, including:

- The County's [Land Use Bylaw](#)
- [Area Structure Plans](#) (ASPs)
- The [Municipal Development Plan](#) (MDP)
- [Intermunicipal Development Plans](#) (IDPs)

These tools help us balance development with long-term sustainability — helping ensure Woodlands County remains a great place to live, work, and invest.

DEVELOPMENT PERMITS

A development permit is required for nearly all changes related to land use or development. If you're unsure whether your next project needs one, please contact us at planning@woodlands.ab.ca.

Development permits are commonly required for:

- New home construction or replacement
- Home-based businesses
- Accessory buildings or structures (e.g., garages, shops, sheds)
- Secondary suites
- Commercial or industrial development
- Signage
- Business operations within the County

APPLYING FOR DEVELOPMENT PERMITS, SUBDIVISIONS & LAND USE AMENDMENTS

Each type of application requires its own application form. You can complete and submit these forms:

- **In person:** Request a paper application at either municipal office.
- **Electronically:** [Click here](#) to download the relevant PDF, and submit the completed form to us.
- **Application portal:** [Click here](#) to submit your application through our online planning portal. This digital process eliminates the need for physical forms.

APPLICATION & REQUEST FEES

Fees must be paid in full before applications, letter requests, or any other planning service requests can be processed. Specific application and request fees are outlined in the [County Fee Bylaw](#).

PAYMENT OPTIONS

The County offers a number of convenient payment options for any Planning & Development applications and services, including:

- **Application Portal:** launching soon
- **Online payments:** Use the secure payment gateway on the [County website](#). Service fees apply.
- **In person:** The County accepts cheque, debit, cash, or credit card at either municipal office.

WHY GET A DEVELOPMENT PERMIT?

A development permit protects both your project and your property's long-term value. Here's why it's essential:

IT IMPROVES RESALE VALUE & BUYER CONFIDENCE

Buyers, realtors, and lawyers often request proof that developments were approved. Missing permits can delay or prevent a sale. A valid permit helps ensure smoother transactions and can increase your property's marketability.

IT PROTECTS YOUR INVESTMENT

A development permit confirms your project meets County bylaws and policies, reducing the risk of future legal or financial issues.

IT ENSURES FAIRNESS & COMPATIBILITY

Permits help ensure development is compatible with surrounding land uses, protecting both you and your neighbours.

IT'S A REQUIREMENT FOR SAFETY CODE PERMITS

You'll need an approved development permit before applying for building, electrical, plumbing, or septic permits from accredited agencies.

IT HELPS YOU AVOID PENALTIES

Unauthorized development can lead to stop-work orders, fines, or even forced removal of structures. A permit helps you avoid these risks.

ACCESS APPROACH APPLICATIONS

If your development or subdivision proposes a new access or a change to an existing access, you must submit an [Access Approach Application](#). Download this form from the County website, or request a hard copy from either municipal office.

LETTER OF REQUEST APPLICATION

If you require a letter of concurrence for a telecommunication tower, an AMVIC or AGLC letter, or any other type of letter from the County, download a [Letter of Request Application](#) from the County website, or request one from either municipal office.

SEWER & WATER SERVICE FEES

If you're a new municipal water utility customer, the County will inform you of any applicable service connection fees at the time of application. In adherence with transparency practices, these fees will be clearly itemized.

Although these fees are not administered by the Planning & Development department, we will make sure you're aware of any amounts due if they apply to your development.

OFF-SITE LEVIES

Certain areas within the County require off-site levy fees at time of development. Before applying, we recommend speaking to a development officer. Doing so will help ensure you're aware of any potential levy fees prior to moving forward with your development.

PRE-APPLICATION MEETINGS

Schedule a meeting with one of our planning experts and get one-on-one advice on development permits, subdivisions, land use amendments and more. This is a great opportunity to receive guidance, clarify requirements, and streamline the application process.

Email planning@woodlands.ab.ca or call the main municipal office to book a meeting.

BUILDING PERMITS & PROVINCIAL SAFETY CODES

Woodlands County is not accredited under the *Safety Codes Act*, meaning we do not issue:

- Building permits
- Electrical, plumbing, gas, or septic permits

These permits are granted by independent agencies approved by the Province. Two such agencies serve the Woodlands County region:

SUPERIOR SAFETY CODES

1-866-999-4777

INSPECTIONS GROUP

1-866-554-5048

Please note that, before applying for a safety code permit, you must have a valid development permit from Woodlands County.

RURAL ADDRESS SIGNS

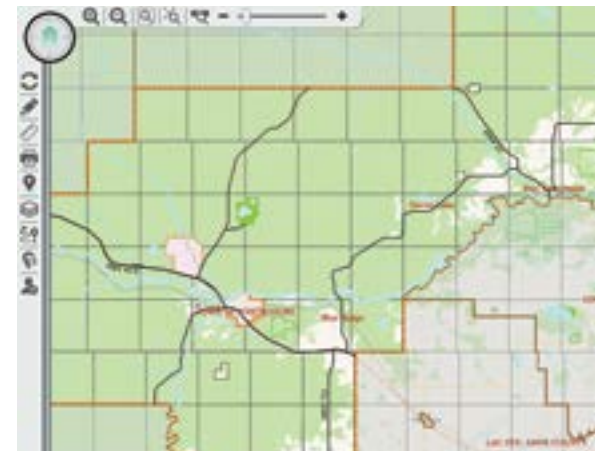


A rural address is essential for first responders to locate your property during an emergency.

Residents are required to purchase their signs from the County. The County is responsible for ordering and installing the signs. Signs are available for both developed and recreational parcels. If your sign needs to be corrected or relocated, contact the main municipal office.

Important: Rural addresses are not based on legal land descriptions and are not valid mailing addresses.

INTERACTIVE COUNTY MAP



Whether you're looking for information about your property or want to explore a breadth of County geographic data, we encourage you to [click here](#) to explore our interactive map.

This online dashboard is a particularly valuable resource when buying, selling, or planning development. It lets you:

- View property boundaries
- Access aerial imagery
- Identify gas lines and utility rights-of-way
- Check parcel sizes and general land data

ADDITIONAL Planning Services

Email planning@woodlands.ab.ca or call the main municipal office to request any of the planning related services and resources listed below.

- **Land Use Amendment Applications**
Request changes to how land is districted or used under the County's [Land Use Bylaw](#).
- **Subdivision Applications**
[Digital applications](#) for single or multi-parcel subdivisions, or lot line adjustments.
- **Development Enforcement**
We investigate land use violations in partnership with contracted peace officers. This includes:
 - Unsightly premises
 - Unauthorized land uses
 - Development without a permit
- **Official Letters & Certificates**
If you need confirmation that a property complies with County bylaws and policies, we can issue:
 - Compliance Certificates
 - Letters of Concurrence



VEGETATION Management

The County is tasked by the Government of Alberta with preventing the spread of prohibited noxious and noxious weeds. This is accomplished by various methods such as spraying, hand picking weeds or mechanical means.

INVASIVE PLANT REBATE

The County offers a **Tall Buttercup / Ox-Eye Daisy Control Rebate Program** to help private landowners prevent the spread of these invasive plants and reduce their levels on infested land. The incentive is tied to the control method used,



with each eligible option qualifying for a different rebate amount.

Payments are capped at \$1,200.00 per

landholder per year. Please note that activities such as mowing, cutting, swathing, burning, and grazing are not considered control options and are not eligible for the rebate.

To learn more about this rebate program, please [click here](#) or call the Regional Municipal Office to speak with an Agriculture Services representative.

RENTAL EQUIPMENT

Agriculture Services maintains a small inventory of equipment for rental by Woodlands County residents. The equipment is subject to availability, and includes:

- Livestock handling equipment
- Sprayers
- Land rollers
- Skunk traps
- Tree planting & pruning equipment

This equipment is available in both the Fort Assiniboine and Whitecourt areas of the County. To reserve, or for more information, call **780-706-0519** for the Whitecourt area, or **780-584-3866** for the Fort Assiniboine area.

Please note that all equipment must remain within Woodlands County boundaries.

VETERINARY SERVICES INC. (VSI)

The County partners with the VSI program to assist residents with the cost of some veterinary procedures for livestock.



To apply for the VSI program, or for more information, please call the Fort Assiniboine Municipal Office at **780-584-3866**.

PREDATOR CONTROL

Agriculture Services, under the authority of the *Agricultural Pests Act* and in cooperation with Alberta Agriculture & Irrigation, coordinates the control of predators causing livestock predation.

BEAVER FLOOD CONTROL



Essential beaver control helps protect natural drainage and prevents flooding damage to private lands, including cultivated fields, pasture, hay land, and woodlots.

Agriculture Services fulfills landowner requests for dam removal from **May 1 to October 31** each year. Each dam removal costs \$200 plus GST per dam.

INSECTS AND DISEASES

Woodlands County participates in annual surveying activities for insects such as grasshoppers as well as diseases such as clubroot and blackleg in canola. Pest identification is also a provided service.

GRAIN MOISTURE TESTING

Grain moisture testing is available at the Fort Assiniboine Office as well as two field locations within the County. Contact the Regional Municipal Office at **780-584-3866** for further information.

RECYCLING

Agriculture Services collects uncontaminated oil and pesticides at the Fort Assiniboine Municipal Yard for the purpose of recycling.

Empty, triple rinsed pesticide containers can be taken to the Fort Assiniboine Regional Municipal office or the Whitecourt Regional Landfill for collection to be recycled. All booklets must be removed. No cardboard please.

CHEMICAL RECOMMENDATIONS

Our Manager of Agriculture Services is qualified to provide chemical recommendations for agricultural pest and weed control within your crops and/or gardens.

MECHANICAL VEGETATION CONTROL

Agriculture Services is responsible for overseeing the mechanical mowing program contracts. The purpose of this program is to improve visibility, weed control and to maintain the integrity of the road.

WORKSHOPS

Agriculture Services (often in partnership with other groups), hosts informative workshops throughout the year. To keep tabs on any upcoming sessions that may interest you, visit the County's events calendar at woodlands.ab.ca/p/upcoming-events.

AGRICULTURE SERVICES

Woodlands County's Agriculture Services team supports regional ag producers and rural residents alike through a broad array of programs designed to promote sustainable agriculture, animal management, and land stewardship practices.

FAMILY & COMMUNITY

Support Services

YOUTH

Enrichment Subsidy

YES! (Youth Enrichment Subsidy) is our program dedicated to ensuring that every child in our County has an opportunity to participate in recreational activities, regardless of their family's financial situation.

Many families in our County face financial barriers to enrolling their children in sports, arts, or other programs. The **YES!** program offers vital assistance by covering part, or all, of the costs associated with both registration fees and necessary equipment.

HOW TO APPLY

Applications for funding through the **YES!** program are available through two methods:

- **In Person:** Application forms are available at either of our Municipal Offices.
- **Online:** Download the program application at woodlands.ab.ca/p/yes-program.

For additional information on seminars, workshops, courses, or events being held or offered throughout Woodlands County, please visit woodlands.ab.ca/p/community-services or call us at **1-888-870-6315**.

FCSS PROGRAM DELIVERY AND REGIONAL PARTNERSHIPS

Woodlands County FCSS works to ensure comprehensive, relevant program & service delivery throughout the region.

The reach and impact of our services are enhanced largely thanks to strategic partnerships with our counterparts in the towns of Barrhead, Mayerthorpe, and Whitecourt.

FUNDING OPPORTUNITIES FOR LOCAL INITIATIVES

The County provides essential funding to local organizations that are developing their own initiatives that meet the provincially-mandated FCSS criteria.

The Woodlands County Community Services department strongly encourages organizations to reach out for assistance or direction regarding any upcoming programs that align with the FCSS mandate.

FCSS GRANT PROGRAMS

FCSS funding supports programs and services focused on preventative community initiatives, including but not limited to:

- **Needs Assessment:** Programs and services that help communities identify their social needs and develop effective responses.
- **Skill Building:** Services that enrich and strengthen family life by developing skills so people can function more effectively within their own environment.

The Family and Community Support Services (FCSS) program supports locally-driven preventative social initiatives that enhance the well-being of individuals, families, and communities within Woodlands County.

NEXT STEPS FOR APPLICANTS

Visit the [FCSS section](#) of the County website for full details on submission and reporting requirements, intake deadlines, and related grant program resources.

- **Volunteerism:** Initiatives that promote, encourage, and support volunteer work across the community.
- **Information Sharing:** Services designed to inform the public about available resources and supports.
- **Family & Child Development:** Programs that foster the social development of children and their families.
- **Senior Well-being:** Initiatives that enhance the quality of life for the retired and semi-retired population.



COUNTY BURSARY OPPORTUNITIES

Each year, Woodlands County extends gifted funding opportunities to local students pursuing post-secondary education.

To qualify for any of the bursaries listed below, you must either be a resident of Woodlands County or have a parent or guardian who owns property in the County. You also must have lived in Woodlands County within the past five years.

Visit the [Community Services section](#) of the County website to download an application for any County bursary. You can also request bursary application forms at either municipal office as well as the Blue Ridge Library.

TWO-YEAR POST-SECONDARY BURSARY



The County awards twelve post-secondary bursaries annually, totaling \$3,000 over two years. Receive \$2,000 for your first year of study and \$1,000 for your second year.

To be eligible, you must be a full-time student enrolled in a recognized and accredited post-secondary institution. You must successfully complete a minimum of three courses per semester or trimester to qualify for that portion of the bursary.

The annual application deadline is October 15.

TWO-YEAR APPRENTICESHIP BURSARY

This bursary is specifically for trades students, with six grants awarded annually. The maximum award is \$3,000 over two years, disbursed as up to \$1,500 for the first year and up to \$1,500 for the second year.

You must be registered in a provincially recognized apprenticeship program, and you must obtain a passing grade on the classroom portion of the program. Applications are accepted on a year-round basis and are awarded on a first-come, first-served basis.

AGRICULTURE BURSARY

One Agriculture Bursary is awarded each year, valued at \$500. You must be enrolled full-time in an agricultural or environmental science program at a post-secondary institution in Alberta.

The annual application deadline is October 15.

COMMUNITY

Programs

We're dedicated to supporting residents through programs that offer financial savings, help memorialize loved ones, and fund local connection events.

Explore the details below to see how these County initiatives can directly benefit you, your family, and your neighbourhood. Get an application for any program at either municipal office or visit the [County website](#).

BENEFITS PROGRAM

Our benefits program is designed to help residents who need it most, providing three valuable forms of support.

If you own your home, you could receive a **\$150 tax rebate**. For residents needing medical travel, we offer a **transportation grant** of up to \$300 per person, per year to help cover costs for health-related appointments. Finally, we provide **three free snowplow flags** per calendar year to help clear your driveway in the winter.

To qualify, you must be a senior (65 years or older), a resident with physical or mental disabilities, or a resident with low-income status.

RURAL COMMUNITY CONNECTIONS GRANT

New to the area? Want to finally meet the neighbours across the road? The Rural Community Connections Grant (formerly the Block Party Grant) is designed to help you strengthen bonds right where you live.

Residents can receive up to \$500 to cover event costs, such as food and entertainment. Whether it's a BBQ, a harvest gathering, or a street meet-and-greet, we want to hear your idea for a great get-together in our proudly rural municipality!

Ready to start planning? Visit the [Rural Connections page](#) of the County website to download the application or stop by either municipal office to request a copy.

Applications are accepted year-round on a first-come, first-served basis, and must be submitted at least 30 days before your event date.



MEMORIAL TREE

Standing tall in Fort Assiniboine's scenic Riverside Memorial Park, the County Memorial Tree ensures the legacies of our most dedicated residents are never forgotten.

This monument is adorned with metal leaves, each paying tribute to a community-minded citizen who has passed on. You can dedicate a leaf in recognition of a loved one who made a difference in one of the following categories:

- Community Pioneers
- Long-term Fire or Emergency Services Personnel
- Long-term Service with a Community Group
- Significant Contributions to the Community

Dedicate a leaf to someone special today. Visit the [Memorial Tree page](#) of the County website to download an application, or stop by either municipal office to request a copy. A \$100 fee is payable upon your application's approval.

BUSINESS Directory



Photo credit: Adrian Constantin

Looking for local goods and services? The County's online [business directory](#) is your essential first stop!

- **Find Local Services:** Quickly locate shops, professional services, tradespeople, healthcare providers, and more.
- **Support Local:** Connect with the heart of our local business economy.
- **Easy to Use:** Search by category or keyword to find exactly what you're looking for.

[Browse the directory](#) and discover some great local businesses today!



Wild Violet Acres

ECONOMIC DEVELOPMENT & Business Support

Woodlands County is more than just another place to conduct business—it's a region primed for growth and innovation.

expectations. We're committed to working proactively with business owners every step of the way to minimize road-blocks, and ensure a predictable, efficient pathway from concept to operation.

- **Promotion & Marketing:** We can help promote your business via County media channels and local networks, ensuring residents and visitors know you're here.
- **Data & Insights:** Gain access to crucial data, land availability, and community insights to help you make informed business decisions.

We know that turning a vision into a thriving enterprise requires more than just an idea—it also needs strategic support, streamlined processes, and local expertise.

Whether you're launching a new venture, buying an existing business, or looking to expand your operation, our Economic Development team stands ready to help.

Our personalized guidance provides you with the market data, programs, and resources necessary to drive your long-term success in our region.

PARTNERS IN YOUR SUCCESS

Our department's mandate is simple: be truly development-friendly.

We understand that time is critical for business. That's why we streamline processes and are proud to maintain a responsive regulatory environment, with the goal of having most permits processed well under standard timeline

HOW WE HELP

Our team provides comprehensive support to help your new or existing business thrive:

- **Permitting & Approvals:** We help you navigate permits and approvals efficiently to get your business up and running quickly.
- **Funding & Grants:** We help identify funding opportunities and provincial or federal grants to support your growth and innovation projects.

GET STARTED TODAY!

If you're setting up shop, expanding, or just exploring your possibilities, contact our Economic Development department and let the world know you're open for business in Woodlands County!

Call the Economic Development team at **780-778-8400** or visit the [Business section](#) of the County website.

SNOW REMOVAL ON PRIVATE DRIVEWAYS

The County plows private driveways for a fee. This service is rendered only after main roads and school bus routes have been cleared. Exceptions to this schedule are made only in specific emergencies:

- To allow school bus drivers to access the closest roadway; and
- To allow persons with medical conditions and/or disabilities to exit their property.

SNOWPLOW FLAG SYSTEM

Residents requesting snowplow services must purchase a snowplow flag and display it at the end of their driveway to initiate service.

Visit the [Winter Operations section](#) of the County website for more information about our opt-in snow removal services. To sign up for private snow removal, you must first

Through planning, construction, and regular maintenance, the Infrastructure Services department works to uphold the standards necessary for the the safety, functionality, and connectivity of the community.

complete a snowplow waiver form—available for pick-up at either municipal office. After you complete the waiver, purchase the required number of snowplow flags. When service is desired, place the purchased flag(s) in a visible location adjacent to your driveway.

Upon completion of the plowing, the grader operator will collect each flag. Repeat this process after the next snowfall, or as you require snow removal.

GRADING OF PRIVATE DRIVEWAYS

Private driveway grading may be conducted by the County as municipal operations permit. This service is available only between April 1 and October 15, each year or as determined by the Director of Infrastructure Services.

To request this service, all residents must submit completed application and waiver forms. Additionally, a non-refundable deposit is required at the time of application. This deposit

will be applied towards the total cost of the service, with any outstanding balance charged separately. Please note that some service restrictions may apply.

HIGHWAYS BELONG TO THE PROVINCE

Our infrastructure crews provide maintenance and snow clearing for all **County-owned roads** throughout the municipality. Primary and secondary highways, however, are maintained by the Government of Alberta.



If residents have concerns regarding the maintenance of a provincial highway, please contact the contractor: Ledcor Highways.

LEDCOR PUBLIC INQUIRIES

1-866-453-3267

SERVICE REQUEST



Service Request is a convenient, automated service request system available directly on the Woodlands County website.

- **Submit Requests:** Quickly report issues and concerns about road maintenance, municipal services and other County-related matters.
- **Ask Questions:** This is a direct channel for submitting questions regarding the spectrum of public services we provide.
- **Send Compliments:** County staff love to hear when they’ve done a good job!

Once you submit your request, it’s automatically routed to the appropriate department for prompt review and resolution.

TIPS FOR A QUICK TURNAROUND

To facilitate the quickest possible response and resolution, we ask that you provide specific and essential details about your matter. It helps to include clear references to road names, specific locations, and any relevant descriptions.

The extra information you provide allows County staff to identify the concern immediately and resolve the issue as efficiently as possible.

Have a question or concern? Click the button below or visit woodlands.ab.ca/p/service-request to submit a request.

SERVICE REQUEST

INFRASTRUCTURE SERVICES



traverse the scenic trail system by foot or bike. When winter arrives, this area becomes the go-to spot for snowshoeing and cross-country skiing.

GEOGRAPHIC CENTRE OF ALBERTA

Deep in the woods lies the literal heart of the province.

Thanks to recent trail upgrades, the three-kilometre journey to the Bear Cairn is now more accessible than ever, offering a smooth and scenic hike for those looking to stand at Alberta's geographic core.

GROAT CREEK GROUP CAMPGROUND

Perfectly set up for your next large gathering, whether it's a family reunion, group campout, or special event. This camping loop offers ten sites (six back-in and four drive-in/pull-off) complete with individual picnic tables and fire rings.

Located just 18 kilometres from Whitecourt on Highway 32, Groat Creek Group Campground has a communal cook shack, a large group fire pit, washrooms, and supplied firewood.



Drumming in the Canyon

PARKS & RECREATION

Across the Region

From the scenic Blue Ridge trails to the awe-inspiring geological formations of Hard Luck Canyon, Woodlands County is where your next great adventure begins.

An exhaustive inventory of Woodlands County's recreational options simply wouldn't fit inside in this guide, but on the next few pages we suggest some great local opportunities for you and your family to get active, meet new people, and build lasting memories.

Let our suggestions set you on your way to exploring our County to its fullest. You'll find endless opportunities for fishing, camping, snowmobiling, and connecting with nature in our thriving natural wonderland.

The map on page 20 will orient you to some of our key destinations.

RECREATION SITES

BERRY NICE SPRAY PARK

Just 20 kilometers from Whitecourt along Highway 658, this seasonal gem offers 13 thrilling water features, making it the perfect spot to cool off on a hot day. Ideal for birthday parties or group outings, the site includes a washroom facility and picnic tables.

BLUE RIDGE RECREATION AREA

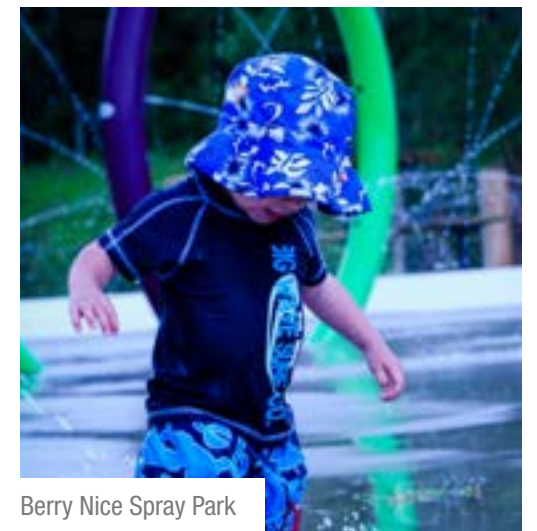
An epic spot for year-round fun. During the summer, visitors can fish for trout in the annually-stocked pond, or



McLeod River Float



Wake Riding on Goose Lake



Berry Nice Spray Park



Athabasca Lookout



Photo credit: Paul Lavoie

Whitecourt is the snowmobile capital of Alberta

HARD LUCK CANYON

Discover this unique geological wonder carved through the sandstone layers of the Paskapoo Formation. Follow the hiking trail to a bridge at the canyon's edge, then venture down a series of stairs and paths to the floor for an up-close look at Hard Luck Creek and the spectacular canyon walls. Picnic areas are provided for relaxation after your exploration. Access is a short drive off Highway 43 on West Mountain Road.

Note: The Canyon is closed during the winter months and typically re-opens in the spring, weather permitting.

MCLEOD RIVER TUBING SITE (PUT-IN)

Launch your tube, sit back, and drift down the McLeod River. The trip lasts from two to three hours, depending on water levels and weather conditions. The site is on West Mountain Road, just outside of Whitecourt.

SCHUMAN LAKE

This little gem is located 24 km west of Fort Assiniboine. The lake is regularly stocked with trout, and the site offers six charming first-come, first-served campsites, along with three day-use areas equipped with picnic tables and fire pits. For tranquility, only non-fuel watercraft are allowed.

COMMUNITY-RUN CAMPGROUNDS

EAGLE RIVER STAGING AREA

Operated by the Whitecourt Trailblazers, this site serves as a snowmobile staging area during the winter. In the warmer months, it transforms into a group camping area capable of accommodating up to thirty campers.

GOOSE LAKE CAMPGROUND

Run by the Goose Lake Recreation Association, this well-kept campground features 48 non-powered sites. It features two playgrounds, coin-operated showers, a dock, and a lovely beach for swimming and relaxing.



Goose Lake

■ More than just another place to live, Woodlands County is a place to thrive.

PROVINCIAL PARKS

CARSON-PEGASUS PROVINCIAL PARK

This expansive provincial park boasts nearly 200 treed campsites, including lakeside, RV, and tent-only options (some with power). With a playground and beach nearby, Carson-Pegasus is perfect for fishing, swimming, hiking, and bird watching in the warm months, or snowshoeing and ice fishing in the winter.

Carson-Pegasus Provincial Park is home to a wide variety of mammals and numerous bird species and is one of Alberta's most popular trout fishing spots. The park's seawall makes fishing easy for visitors without boats.

FORT ASSINIBOINE SANDHILLS WILDLAND PARK

Designated a wildland park in 1997, this vast natural area spans 66 square kilometers along the western shore of the Athabasca River. The park includes Pemmican Island and other islands in the river.

This park offers excellent bird and wildlife watching, fishing, hiking, and horseback riding. Three staging areas—Central, Athabasca Viewpoint, and Klondike Trail—provide parking and access to more than 80 km of trails.

Access the park via Highway 661 through Fort Assiniboine or take the Klondike Ferry crossing.

TRAIL SYSTEMS

Woodlands County is a sprawling playground for outdoor enthusiasts, boasting hundreds of kilometers of designated trails throughout the region.

Whether you're looking for the high-octane thrill of OHV use, the solitude of back country camping, or the steady rhythm of trail running, there's a path here for every pace and every season.

GOLDEN TRIANGLE

This renowned 350-kilometer snowmobile trail system connects the vibrant communities of Whitecourt, Fox Creek, and Swan Hills. It features varied terrain and strategically located warm-up shelters throughout.

Recognized as an award-winning snowmobile trail network, it promises hours of exhilarating enjoyment, especially during the winter season.

TIMEU OFF-HIGHWAY VEHICLE RECREATION AREA

Situated northeast of Fort Assiniboine, approximately 40 kilometers north of Barrhead. The main staging area is about one kilometer west of Klondyke Crossing Ferry on Highway 661.

The designated riding area is north of the highway and west of the Athabasca River.



Blue Ridge Recreational Area



Sandhills Wildland Park

ATTRACTIONS

FORT ASSINIBOINE MUSEUM

An architectural reflection of the area’s rich fur-trading history, the Fort Assiniboine Museum is constructed in the classic Hudson’s Bay-style of a trading post. Artifacts trace the progression of the second-oldest fort in Alberta, with records dating back to the 1700s.

Open during the summer months, this is a perfect afternoon retreat to explore the key historic movements that shaped Woodlands County and Western Canada.

WORLD’S LARGEST WAGON WHEEL AND PICK AXE

This impressive roadside stop features a grand wagon wheel standing an incredible seven meters in height, alongside a pickaxe reaching just over six meters.

The monument serves as a reflection of Fort Assiniboine’s rich cultural history as a major trade and supply point during the Hudson’s Bay era and the Klondike Gold Rush in the 1800s.

Located next to the museum, it provides a great backdrop for photos and makes an ideal starting point for a day of historical discovery.



World’s largest wagon wheel and pick axe

COMMUNITY PARTNERSHIPS

EASTLINK PARK



Eastlink Park

Eastlink Park is an ideal destination for affordable, family-friendly fun. With a terrain park, beginner runs, and two tubing runs, there’s something for everyone.

A 570-foot conveyor lift provides easy access to all areas, and park staff use a state-of-the-art snowmaking system to groom Eastlink Park’s slopes nightly. Rentals and lessons are available on site.

E.S. HUESTIS DEMONSTRATION FOREST

An ideal outing for those passionate about the environment or interested in the modern forestry practices that have shaped the region.

Traverse the seven-kilometer trail dotted with 26 interpretive signs. You can walk, run, bike, or drive the trail, and guided tours are offered between May and August.

FOREST INTERPRETIVE CENTRE

Operated by the Town of Whitecourt, this facility is home to the Visitor Information Centre, an interpretive gallery, and the John & Audrey Dahl Heritage Park.



Hard Luck Canyon

DESTINATIONS

Worth Discovering


A place of natural splendor, timeless heritage and outdoor adventure of every stripe.

Whether you seek the thrill of the trail or the tranquility of a lakeside retreat, we invite you to explore our celebrated attractions and hidden gems. Use this map to find key destinations including:

Natural Wonders: Marvel at the geological formations of Hard Luck Canyon, trek the unspoiled Blue Ridge Recreation Area, and enjoy the serene waters of Schuman and Goose Lakes.

History & Culture: See our region as it once was at the Fort Assiniboine Museum. Take a selfie by the world's largest wagon wheel and pick axe — iconic symbols of our intrepid pioneer heritage.

Outdoor Adventure: Explore the network of trails coveted by ATV and snowmobiling enthusiasts alike.

 **EXTERNAL LINKS:**

This map has links to locations maintained by third-party operators. Because this external content may change without notice, the County cannot guarantee its maintenance, accuracy or reliability over time.

LOOKOUT POINTS

- 1 [Athabasca River Lookout](#) 2 [Coal Mine Hill Lookout](#)

RECREATION AREAS

- 1 [River Tubing Put-in Point](#)
2 [River Tubing Take-out Point](#)
3 [Graham Acres Sports Field](#)
4 [Festival Park Outdoor Waterpark](#)
5 [Allan & Jean Millar Centre](#)
6 [JDA Place Twin Arenas](#)
7 [Blue Ridge Rink & Playground](#)
8 [Carbonex Contractors Centre Curling Rink](#)
9 [Anselmo Rink, Playground & Ball Diamond](#)
10 [Fort Assiniboine Arena](#)

OHV STAGING & RECREATION

- 1 [Eagle River Snowmobile Staging Area](#)
2 [Whiteridge MX Park](#)
3 [Timeu OHV Recreation Area](#)
4 [Groat Creek Snowmobile Staging Area](#)

KEY ATTRACTIONS & POINTS OF INTEREST

- 1 [Fort Assiniboine Museum & Historic Site](#) 4 [Forest Interpretive Centre](#)
2 [World's Largest Wagon Wheel & Pickaxe](#) 5 [Whitecourt Airport](#)
3 [Huestis Demonstration Forest](#) 6 [Eagle River Casino](#)

PARKS, CAMPGROUNDS & DAY-USE AREAS

- | | | |
|-----------------------------------------------|-----------------------------------------------|------------------------------------------------------------------------|
| 1 Groat Creek Day Use Area | 7 Berry Nice Spray Park | 13 Fort Assiniboine Boat Launch |
| 2 Groat Creek Campground | 8 Blue Ridge Recreation Area | 14 Horse Creek Ranch |
| 3 Hard Luck Canyon | 9 Goose Lake Campground | 15 Eagle Creek Campground |
| 4 Alberta's Geographic Centre | 10 Goose Lake Day Area | 16 Garter Snake Hibernaculum |
| 5 Little McLeod Lake | 11 Schuman Lake Day Use Area | 17 Fort Assiniboine Sandhills Wildland Provincial Park |
| 6 McLeod Lake | 12 Freeman River Day Use Area | |



Hard Luck Canyon

Photo credit: Austin Butler

See you in the woods!



MAIN MUNICIPAL OFFICE

Box 60, #1 Woodlands Lane | Whitecourt, AB | T7S 1N3
Reception: **780-778-8400** (toll free at 1-888-870-6315)

REGIONAL MUNICIPAL OFFICE

61053A Hwy 33 | Fort Assiniboine, AB | T0G 1A0
Reception: **780-584-3866** (toll free at 1-866-584-3866)