
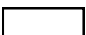




# Legend

-  Highway
-  Alberta
-  IDP Boundary Between Whitecourt and Woodlands County
-  Woodlands County



0 25 50 75 km

Woodlands County makes no representation or warranties regarding the information contained in this document, including, without limitation, whether said information is accurate or complete. Persons using this document do so solely at their own risk, and Woodlands County shall have no liability to such persons for any loss or damage whatsoever.

This document shall not be copied or distributed to any person without the express written consent of Woodlands County.

© 2011 Woodlands County. All Rights Reserved.

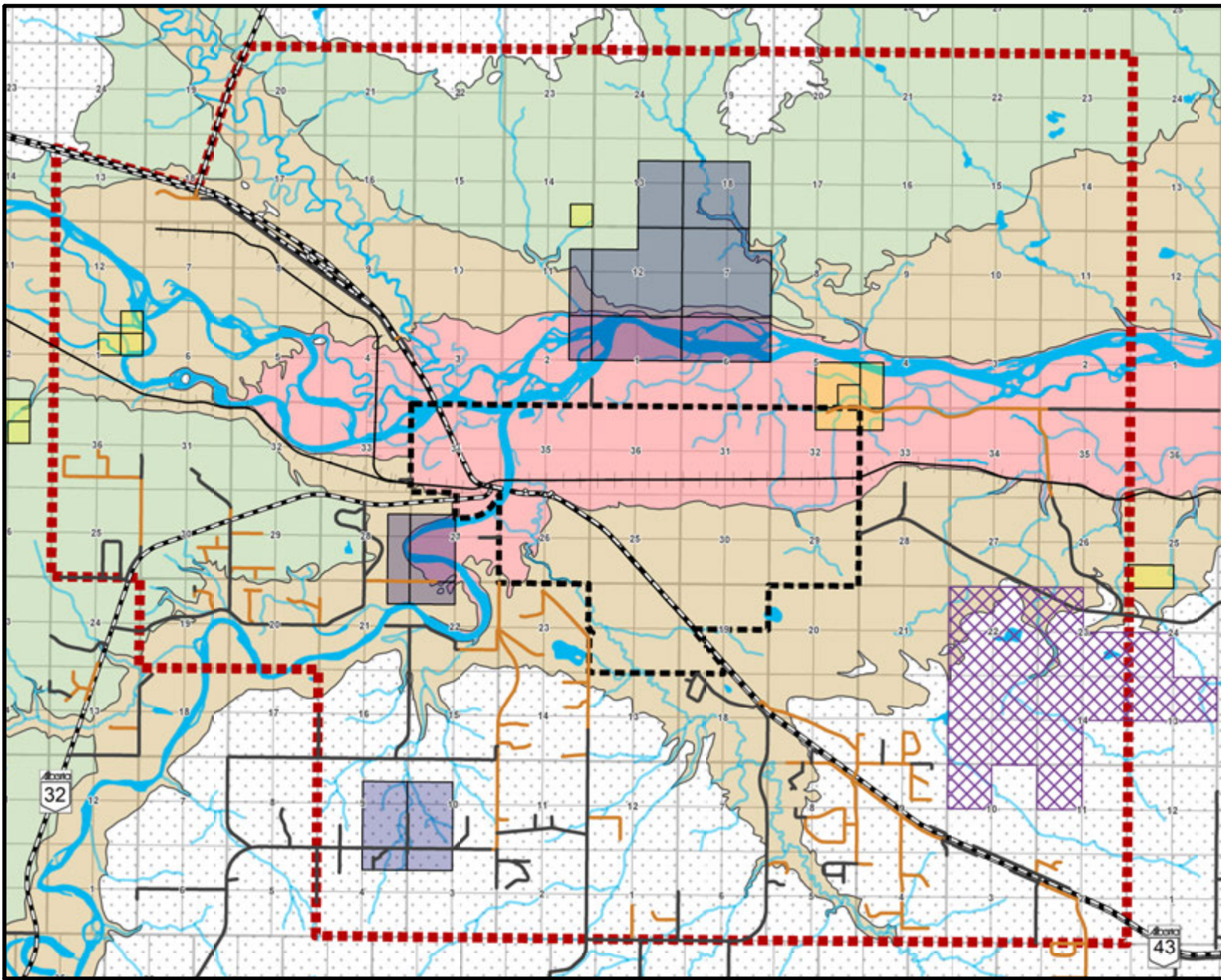


**WOODLANDS COUNTY**  
*Whitecourt*  
 Box 60, #1 Woodlands Lane  
 Whitecourt, Alberta  
 T7S 1N3  
 Phone: (780) 778-8400  
 Fax: (780) 778-8402

Projection: 10TM NAD 83 Date: November 9, 2011



## Figure 1.0 - Overview Map



# Legend

- County Gravel
- County Paved
- Highway Paved
- Railway
- IDP Boundary
- Old Ski Area
- Whitecourt

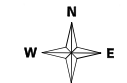
## Elevation (m)

- 668
- 725
- 768
- Outside Dataset

## Historical Resources \*

- Archaeological
- Cultural

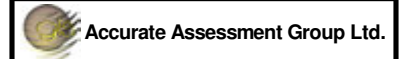
\* Historical Resource parcels taken from provincial database and prior to development Historical Resource Assessments may be required where requested by the development authority. Areas are approximate from preliminary study. Further assessments will pinpoint avoidance and/or mitigation requirements.



Woodlands County makes no representation or warranties regarding the information contained in this document, including, without limitation, whether said information is accurate or complete. Persons using this document do so solely at their own risk, and Woodlands County shall have no liability to such persons for any loss or damage whatsoever.

This document shall not be copied or distributed to any person without the express written consent of Woodlands County.

© 2011 Woodlands County. All Rights Reserved.



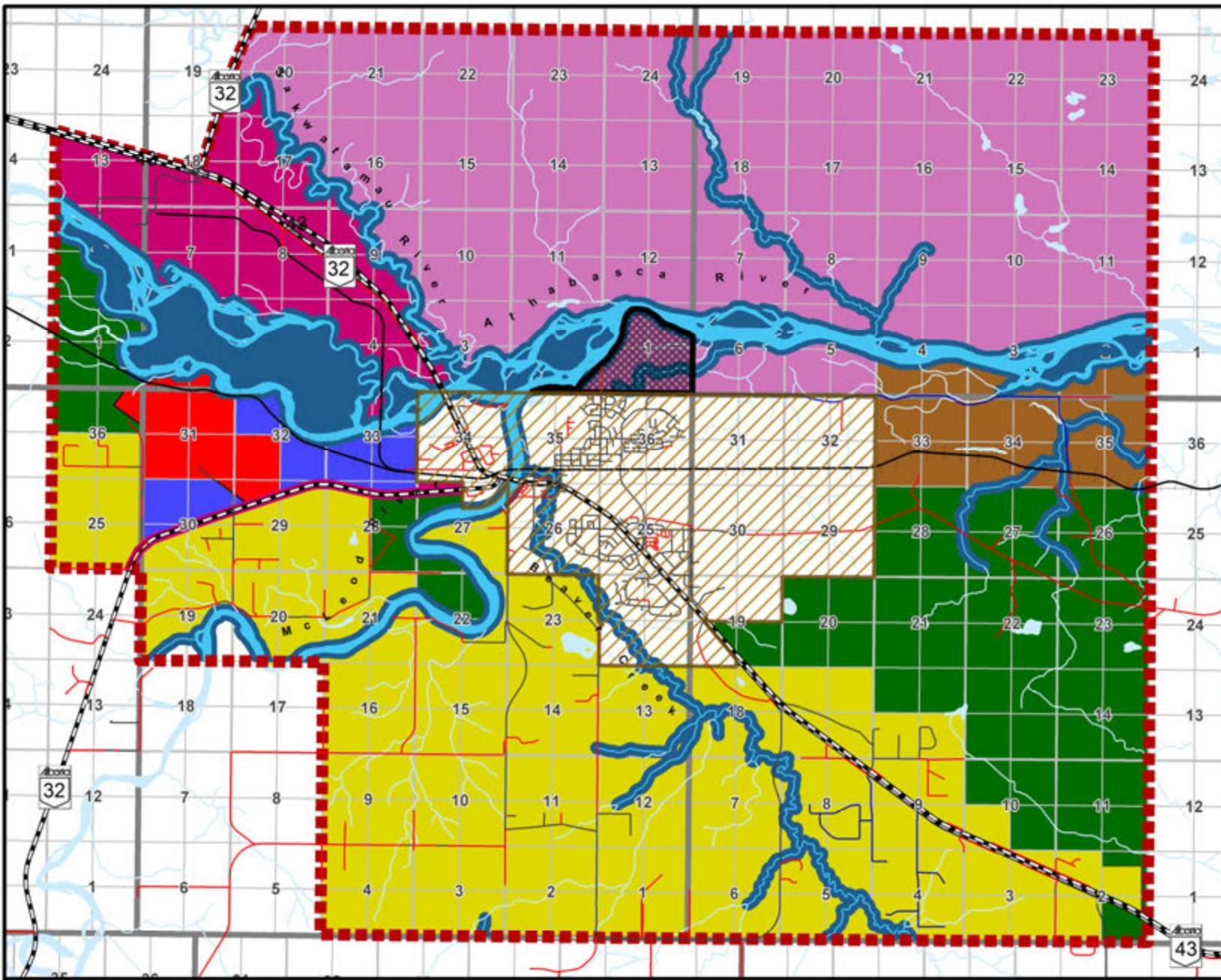
**WOODLANDS COUNTY**  
Whitecourt  
Box 60, #1 Woodlands Lane  
Whitecourt, Alberta  
T7S 1N3  
Phone: (780) 778-8400  
Fax: (780) 778-8402

Projection: 10TM NAD 83 Date: November 9, 2011



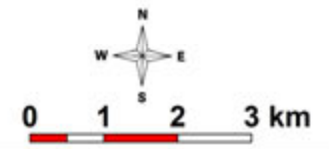
# Figure 2.0 - IDP Geophysical Features





# Legend

- County Gravel
  - County Paved
  - Highway Gravel
  - Highway Paved
  - IDP Boundary
  - Potential Setback Area
  - Proposed Annexation
  - Whitecourt
- 
- ### Land Use
- Agricultural
  - Airport Industrial Transition
  - Airport Master Plan
  - Country Residential
  - Highway Corridor
  - Natural Resource Area
  - Town Growth Direction



Woodlands County makes no representation or warranties regarding the information contained in this document, including without limitation, whether said information is accurate or complete. Persons using this document do so solely at their own risk, and Woodlands County shall have no liability to such persons for any loss or damage whatsoever.

This document shall not be copied or distributed to any person without the express written consent of Woodlands County.

© 2012 Woodlands County. All Rights Reserved.

Accurate Assessment Group Ltd.



## Figure 3.0 - IDP Land Use

WOODLANDS COUNTY  
Whitecourt

Box 66, 61 Woodlands Lane  
Whitecourt, Alberta  
T7S 1N3  
Phone: (780) 778-8400  
Fax: (780) 778-8402

Projection: 10TM NAD 83 Date: August 29, 2012